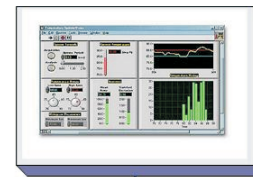


## OMNILink: *DLL software for the 3400 series*



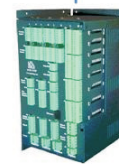
Windows Program  
running  
LabView, .NET, VB, Java, etc.

API

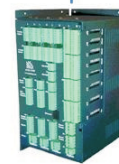
OMNILink DLL



MDE 3400



MDE 3400



MDE 3400

### Overview

OmniLink is a Windows DLL (Dynamic Linked Library) that provides programmers and 3<sup>rd</sup> part software package (such as Labview) users a very easy way for a complete real-time multi-threaded communications interface to one or more 3400 series of controllers from MDE.

OmniLink eliminates the need for any communication drivers or complex multi-tasking programs to retrieve or change any real-time 3400 controller parameter.

OmniLink automatically detects any networked 3400 controllers and immediately begins gathering real-time data from all the controllers it finds. The fast Ethernet connection to 3400 controllers guarantees very fast data retrieval.

OmniLink provides a very simple API to read or write any parameter in any of the networked controllers. OmniLink's data gathering is done completely in a real-time background task so that your program can get the latest data without waiting.

Calling the OmniLink API will retrieve the data from a local PC database that is refreshed in real-time by the OmniLink DLL.

In addition, the OmniLink module easily configured to create data log files on the local PC and will handle all file creation and data logging. The data files can be read directly by Microsoft Excel.

All 3400 configuration parameters are available through OmniLink. You change controller setup, save it to a file and send to a controller with 3 API function calls.

Many 3<sup>rd</sup> part software programs, such as Labview can use the OmniLink DLL directly without any user written Labview drivers.

Any Windows program with the ability to call DLL functions can take advantage of the OmniLink features. Labview, Visual Basic, Java, and .NET example programs are available on the MDE website: [www.mdeeng.com](http://www.mdeeng.com)

### Features and Benefits

#### Eliminates the need for communication drivers or multi-tasking programs.

- No software driver development needed saves you time and money.
- Handle different versions of Windows and Service Packs without maintenance problems.

#### Automatically detects networked 3400 controllers

- No configuration files to build or update keeps maintenance simple.
- No unit addressing to keep track of.
- Automatically handles units that are powered off/on.

#### OmniLink can log process data automatically to Excel compatible files.

- Start Data Logging with a single API call keeps your application simple.
- View or graph data in Excel.
- Easily set which parameters you want to log and the logging rate.

#### Use SUPERVIEW and OmniLink together

- User **SUPERVIEW** to completely configure each 3400 controller on your network then use Labview or other user program as the User Interface to avoid retraining operators.
- Build all you Recipes with SuperView, then use your program with OmniLink to Start/Stop the process or start a new recipe.

#### Use OmniLink with Labview

- Use all the Labview tools along with OmniLink to display or change any 3400 controller parameter quickly and easily.
- Integrate the 3400 into your current Labview system with a minimum of changes to your Labview environment.